

Tavolini

# Supernova



Dall'ampia famiglia Supernova tavolini di diverse altezze e dimensioni, con piani in gres o legno ovali oppure rotondi, rettangolari o quadrati con angoli stondati. La base è in metallo con testa semisferica in vista. Sono progettati da Signorotto&Partners.



## TAVOLINI DA SALOTTO SUPERNOVA

Signorotto+Partners ha ideato un'intera famiglia di tavolini da salotto, con diverse forme e altezze, da usare come appoggio o come elementi per valorizzare il centro stanza, da soli o da accostare fra loro. Sono sei più uno, quello che vuol distinguersi.



## TAVOLINO CON VASSOIO SUPERNOVA

Con Supernova c'è anche la versione tavolino rotondo con piano in legno o in gres, completa di vassoio girevole. Questo è fissato sopra il top e interamente rivestito in cuoio nei colori a cartella.



## TAVOLINI IN LEGNO O GRES E METALLO

I tavolini da salotto Supernova hanno il basamento in metallo con le gambe che raggiungono l'altezza del piano e mettono in mostra la loro testa sferica. I piani possono essere in legno, nelle versioni essenza, laccato opaco o nelle superfici speciali.



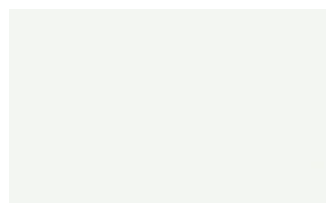
# FINITURE

Scopri subito tutte le finiture gres e legno disponibili, in particolare quelle speciali, per il tavolino Supernova e immagina come lo vorresti e quanti ne vorresti a casa tua. spazio.

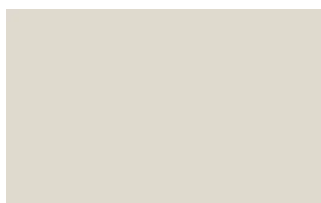
## Laccati

### LACCATI OPACHI

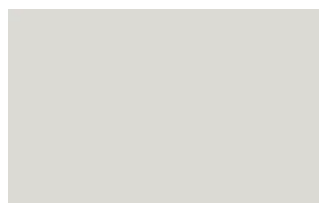
Laccati opachi



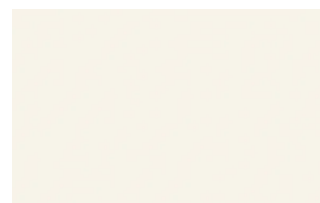
Bianco



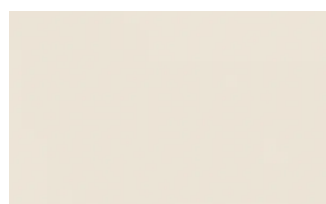
Ghiaccio



Sabbia



Panna



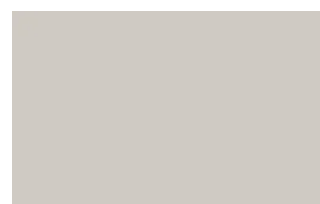
Crema



Grigio seta



Grigio perla



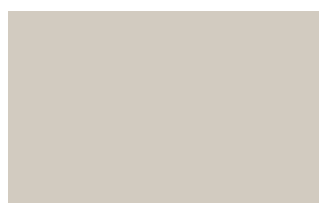
Light grey



Fior di loto



Giallo senape



Tortora



Canapa



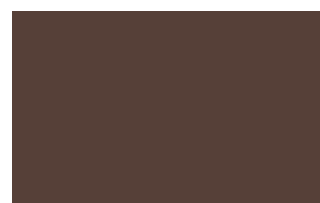
Corda



Dark grey



Terracotta



Moka



Rosso bordeaux



Rosso



Rosa cipria



Bruciato



Carta da zucchero



Grigio blu



Verde pallido



Verde malva



Grigio aston



Celeste



Turchese



Grigio Garda



Blu cobalto



Oceano

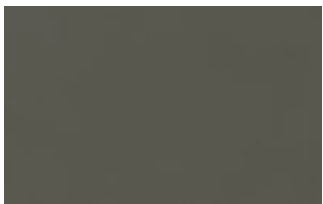


Grigio antracite

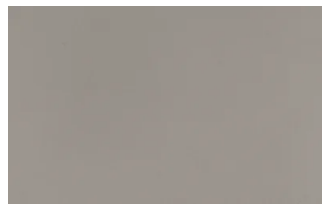


Nero

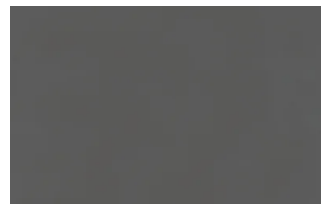
### Laccati opachi micalizzati



Titanio



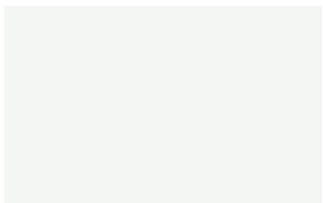
Nichel



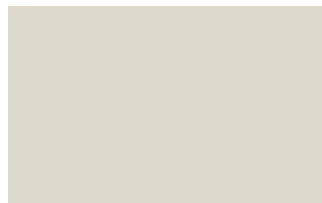
Piombo

## LACCATI LUCIDI

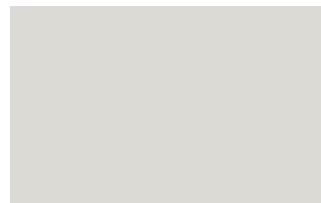
### Laccati lucidi



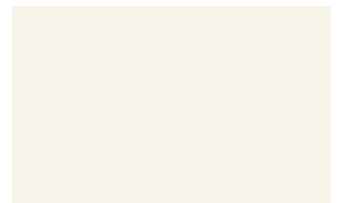
Bianco



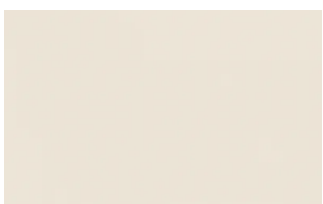
Ghiaccio



Sabbia



Panna



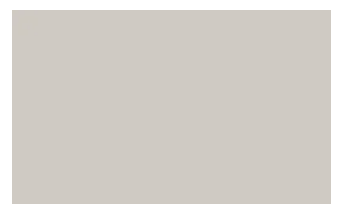
Crema



Grigio seta



Grigio perla



Light grey



Fior di loto



Giallo senape



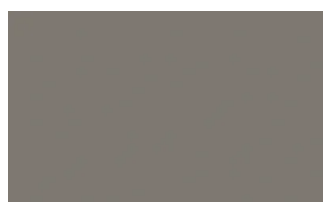
Tortora



Canapa



Corda



Dark grey



Terracotta



Moka



Rosso bordeaux



Rosso



Rosa cipria



Bruciato



Carta da zucchero



Grigio blu



Verde pallido



Verde malva



Grigio aston



Celeste



Turchese



Grigio Garda



Blu cobalto



Oceano



Grigio antracite

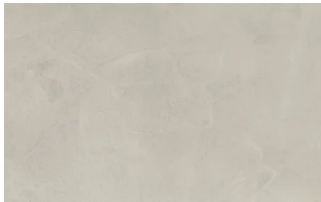


Nero

## SUPERFICI UP

Laccati effetto cemento

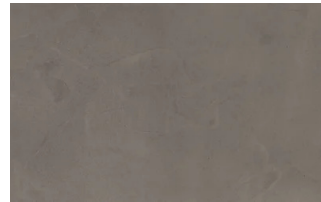




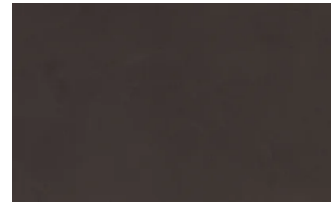
Perla



Argilla

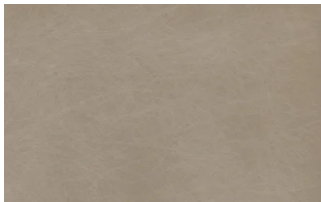


Grafite



Lava

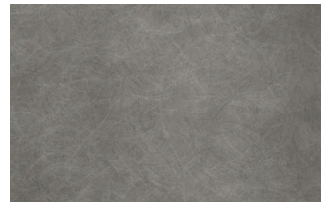
## Laccati metallici



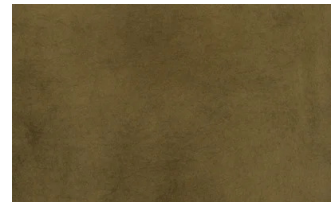
Nichel



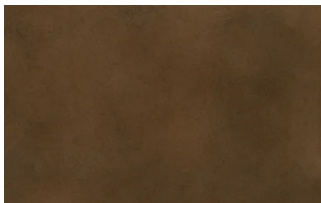
Piombo



Titanio



Ossido ottone

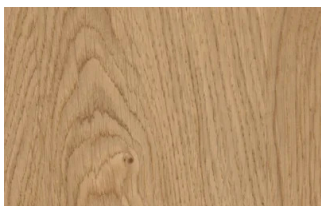


Ossido bronzo

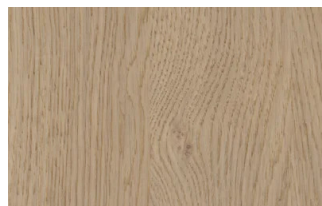
## Essenze

### ESSENZE 1

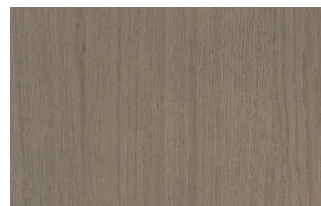
#### Essenze 1



Rovere naturale



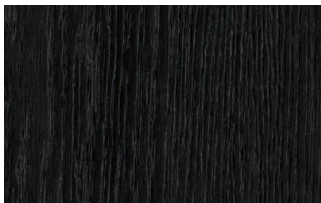
Rovere visone



Rovere cenere



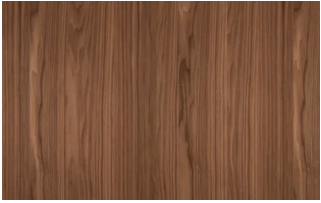
Rovere castoro



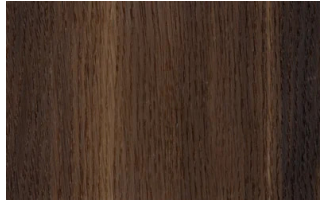
Rovere carbone

### ESSENZE 2

#### Essenze 2



Noce canaletto

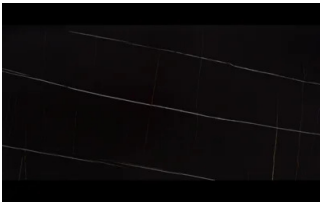


Rovere termotrattato

## Gres

### GRES

#### Gres opachi



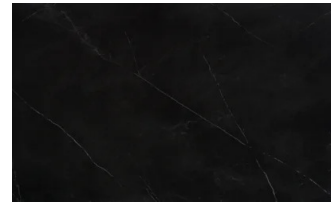
Azalai nero



Jasper moka



Storm grigio



Storm nero

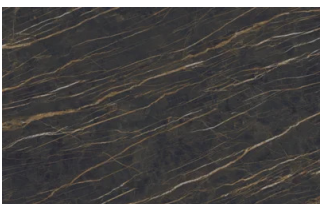


Senda grigio

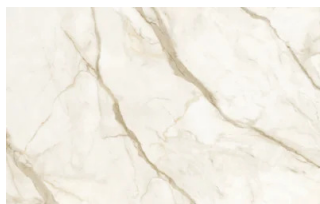


Pacific bianco

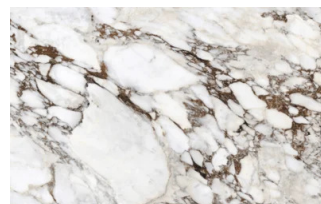
#### Gres lucidi



Noir desir



Calacatta oro



Breche capraia

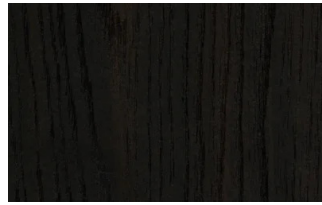
## Materici

### MATERICI

#### Materici



Avana



Rovere termotrattato



Rovere carbone



Pietra piacentina

## Metalli

### METALLI 1

#### Metalli 1



Nero



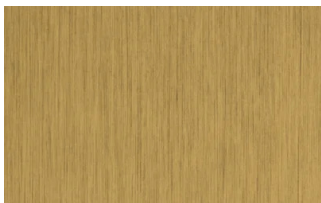
Titanio



Brown

### METALLI 2

#### Metalli 2

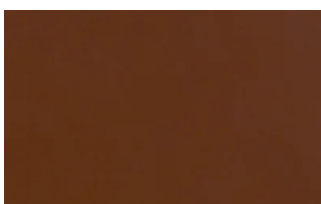


Ottone anticato

## Cuoi

### CUOI

#### Cuoi



Naturale



Beige

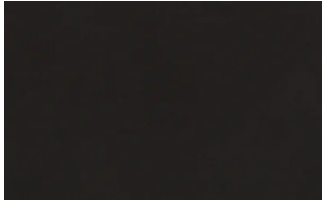


Corda



Grigio





Testa di moro



Nero